



CALIFORNIA'S MARINE PROTECTED AREAS

what are marine protected areas



Over 100 years ago, the United States protected our natural wonders by creating National Parks. Now, California is doing the same for our ocean through the Marine Life Protection Act. Marine protected areas are underwater parks where sea life can thrive.



Who decided where to put MPAs?

Areas were selected based on the best available science and input from the community. The process was a collaboration between divers, fishermen, conservationists, and members of the public. Recommendations were reviewed by experts before adoption by California's Fish and Game Commission.

What can I do in MPAs?

Like National Parks, MPAs are open to the public for education, research and appreciation. They offer great opportunities for diving, kayaking, surfing and wildlife viewing.

How do MPAs work?

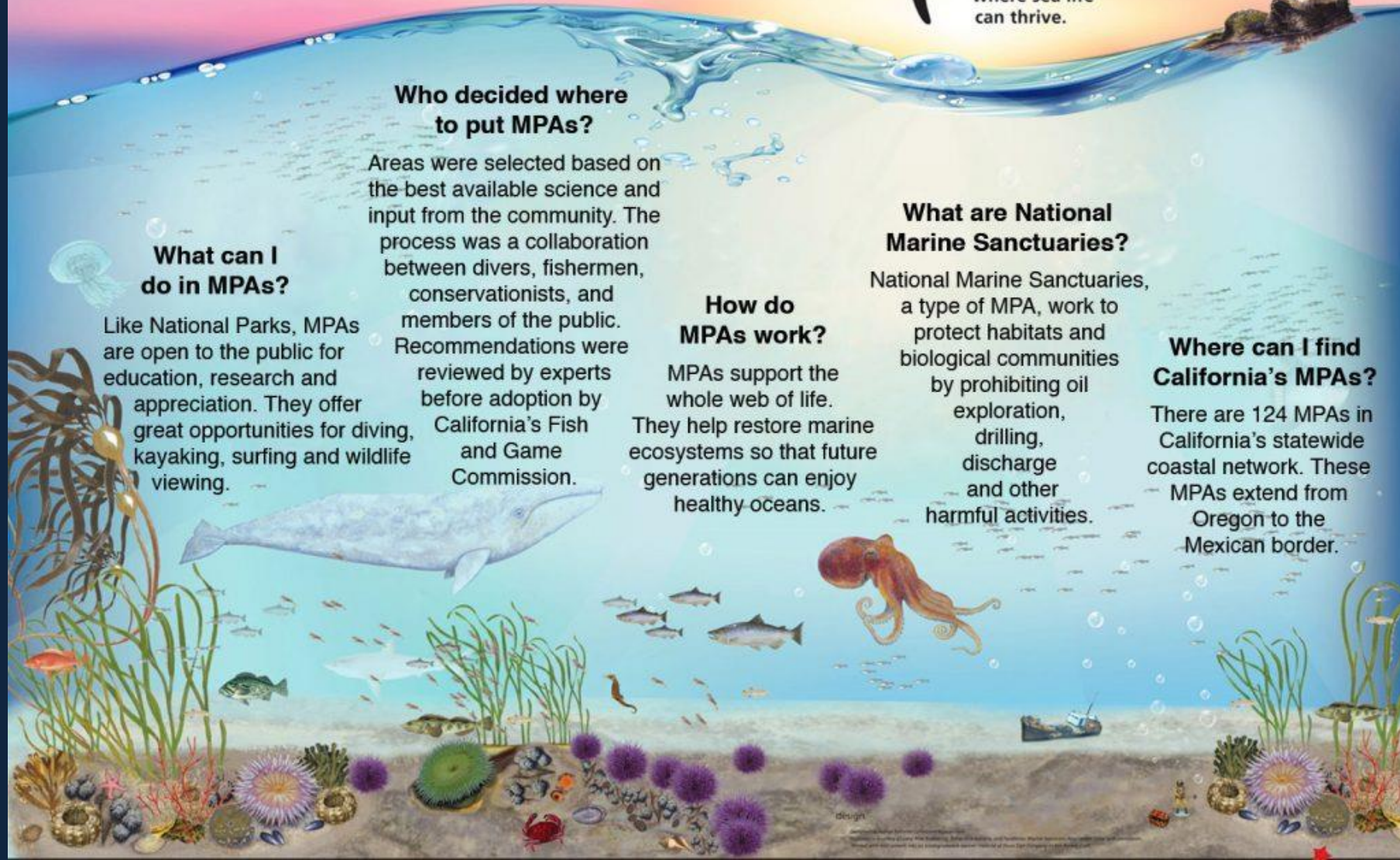
MPAs support the whole web of life. They help restore marine ecosystems so that future generations can enjoy healthy oceans.

What are National Marine Sanctuaries?

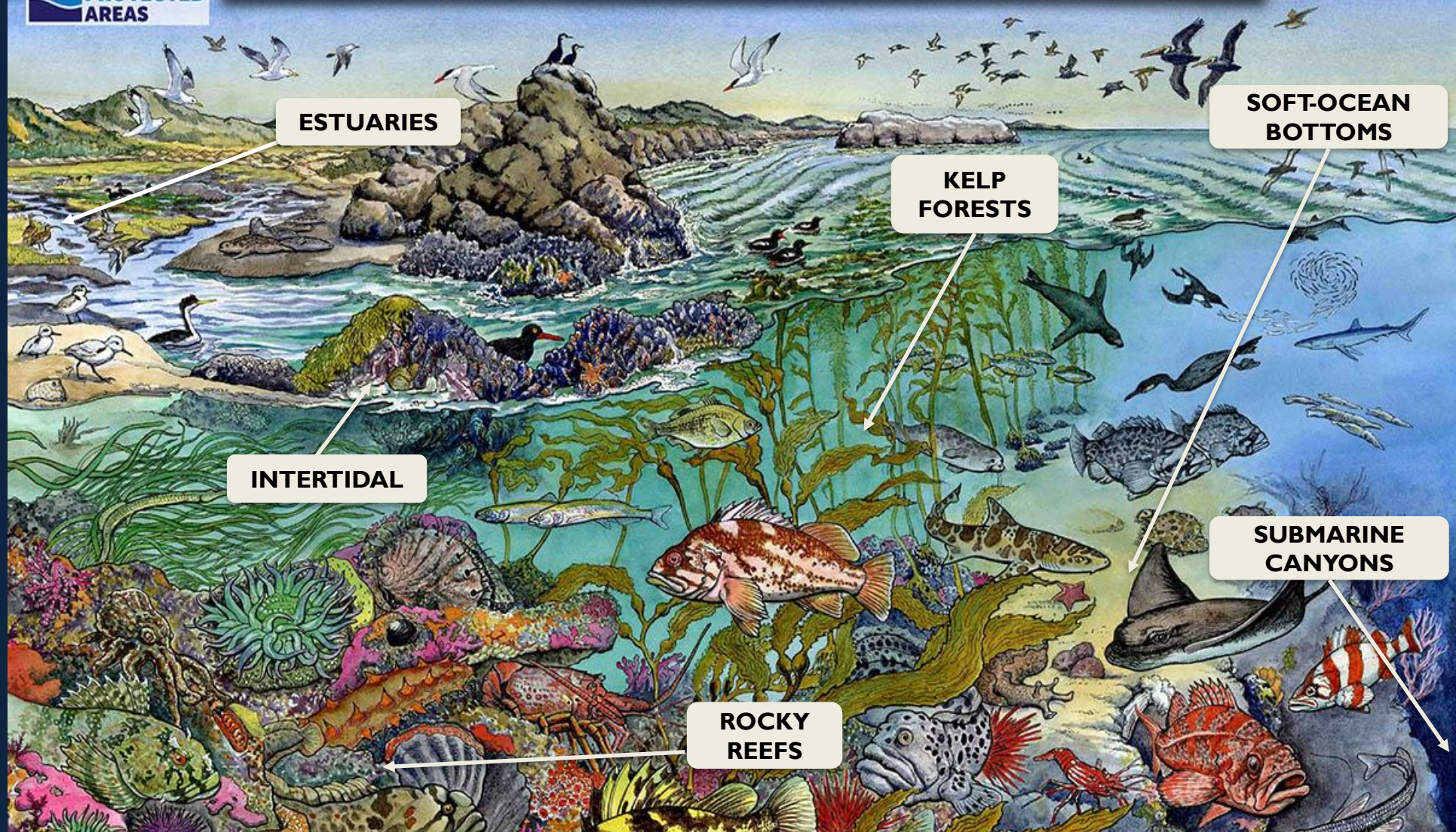
National Marine Sanctuaries, a type of MPA, work to protect habitats and biological communities by prohibiting oil exploration, drilling, discharge and other harmful activities.

Where can I find California's MPAs?

There are 124 MPAs in California's statewide coastal network. These MPAs extend from Oregon to the Mexican border.

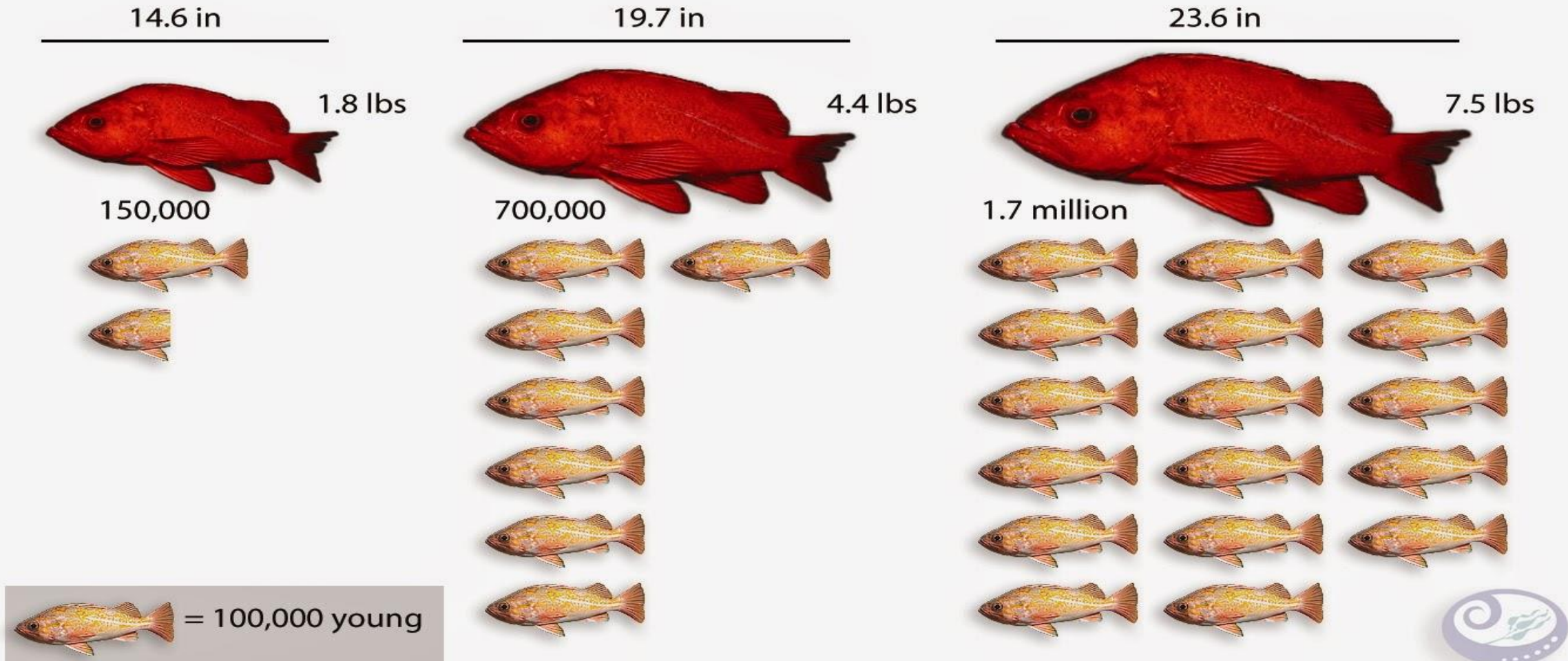


MPAs PROTECT A VARIETY OF HABITATS



THE MPA NETWORK CONTAINS REPRESENTATIVE HABITATS FOUND THROUGHOUT COASTAL WATERS, INCLUDING ESTUARIES, INTERTIDAL ZONES, ROCKY REEFS, KELP FORESTS, SOFT-OCEAN BOTTOMS AND SUBMARINE CANYONS.

BIG OLD FAT FERTILE FEMALE FISH (BOFFF)



Average numbers of young produced by three different sizes of vermilion rockfish.

Data: Love et al. (1990) NOAA Technical Report

WHAT CAN YOU DO IN YOUR MPA?

STATE MARINE RESERVES

CAN SWIM, DIVE, SAIL, SURF, SNORKEL, KAYAK, TIDE POOL, AND EXPLORE!

CANNOT TAKE, HARM, OR PURSUE ANYTHING -LIVING OR NONLIVING- FROM THESE AREAS.

STATE MARINE CONSERVATION AREAS

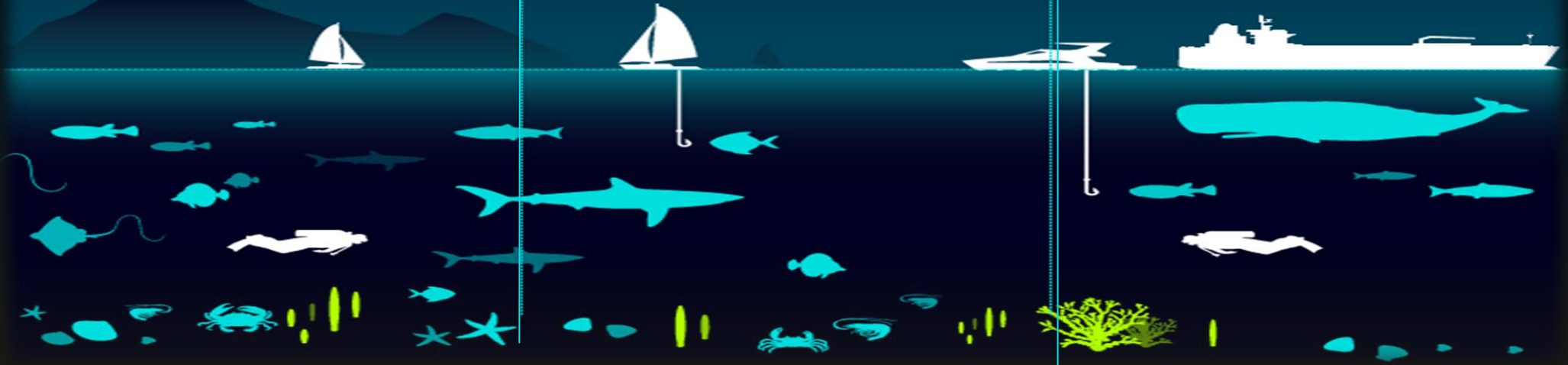
CAN TAKE CERTAIN SPECIES RECREATIONALLY & COMMERCIALY WITH A LICENSE.

CAN ALSO SWIM, DIVE, SAIL, SURF, SNORKEL, KAYAK, TIDE POOL, AND EXPLORE!

MULTI-USE AREA NATIONAL MARINE SANCTUARIES

CAN TAKE MOST SPECIES RECREATIONALLY & COMMERCIALY WITH A LICENSE.

CAN ALSO SWIM, DIVE, SAIL, SURF, SNORKEL, KAYAK, TIDE POOL, AND EXPLORE!



MANY KINDS OF MPAS--- WHILE NATIONAL SANCTUARIES DON'T LIMIT TAKE, STATE MPAS MAY LIMIT SOME OR ALL FISHING AND COLLECTING. KNOW THE RULES BEFORE YOU GO!

SONOMA COUNTY MPAS

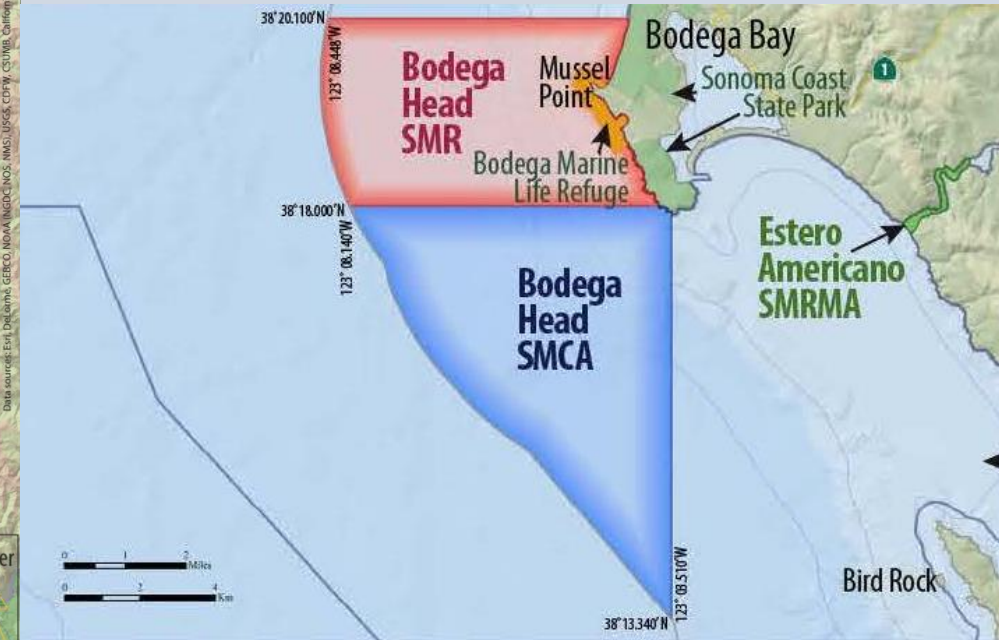
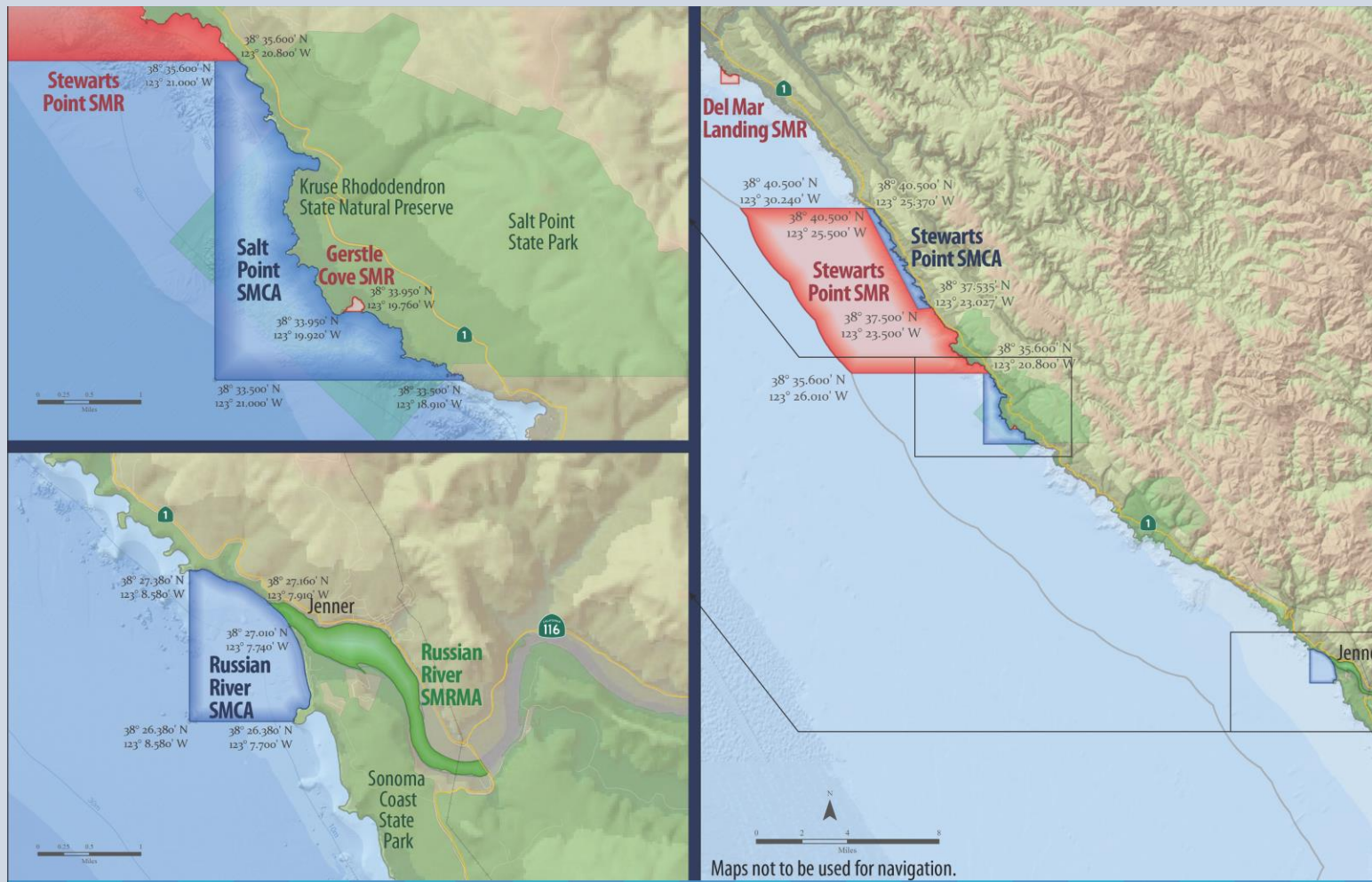
STATE MARINE RESERVES (SMR)

STATE MARINE CONSERVATION AREAS (SMCA)

SPECIAL CLOSURES

STATE MARINE RECREATIONAL MANAGEMENT AREA

1. DEL MAR LANDING SMR
2. STEWARTS POINT SMR & SMCA
3. SALT POINT SMCA
4. GERSTLE COVE SMR
5. RUSSIAN RIVER SMR
6. RUSSIAN RIVER SMRMA
7. BODEGA HEAD SMR & SMCA
8. ESTERO AMERICANO SMRMA



Marine Protected Area		Permitted Consumptive Uses	
Del Mar Landing, Stewarts Point, Gerstle Cove, Bodega Head, Point Reyes, Estero de Limantour, North Farallon Islands, and Southeast Farallon Island SMRs		Take of all living marine resources, including shells and rocks, is prohibited.	
Take of all marine resources is prohibited <u>EXCEPT</u> :			
Russian River, Estero Americano & Estero de San Antonio SMRMAs	Waterfowl may be taken in accordance with the general waterfowl regulations.		
Stewarts Point SMCA	Recreational take of plants (no sea palm), invertebrates, finfish by hook-and-line, surf smelt by beach net, and certain species by hand-held dip net.		
Salt Point SMCA	Recreational take of abalone and finfish.		
Russian River SMCA	Recreational and commercial take of Dungeness crab by trap. Recreational take of surf smelt by hand-held dip net or beach net.		
Bodega Head SMCA	Recreational take of Dungeness crab by trap, market squid by hand-held dip net, and pelagic finfish by trolling. Commercial take of Dungeness crab by trap, market squid by round-haul net, and pelagic finfish by trolling or round-haul net.		
Drakes Estero SMCA	Recreational take of clams.		
Point Reyes SMCA	Recreational and commercial take of salmon by trolling and Dungeness crab by trap.		
Special Closures			
Point Reyes Headlands, Point Resistance Rock, Double Point/ Stormy Stack, North Farallon Islands, and Southeast Farallon Island Special Closures	Restricted boating and access. No person except employees of CDFW, USFWS, NOAA or USCG during performance of their official duties, or unless permission is granted by CDFW shall enter.		

RUSSIAN RIVER STATE MARINE CONSERVATION AREA & RECREATIONAL MANAGEMENT AREA



- SMRMA goes from mouth of river upstream to HWY 1
- SMCA is only 1 square mile along shore.
- Historically, Russian River supported Steelhead, Coho Salmon, and Chinook Salmon. Both set up to protect salmon-
- Soft bottom habitat used by Bat Rays, flat fish, smelt, surfperch, and Dungeness crabs.
- Sandy seafloor flanked by rocky reefs where snails, whelks, anemones, rockfish, and Lingcod.

BODEGA HEAD STATE MARINE RESERVE & STATE MARINE CONSERVATION AREA



- Offshore Bodega Head One of most expansive rocky reefs in N CA.
- Reef encompasses 10 square miles -260 feet deep.
- NO take SMR to north.
- Gray whales feast on rich upwelling waters, as do cormorants, murre, guillemots, and auklets
- Kelp Forests home to rockfish, surfperch, greenlings, urchins, and abalone.
- Onshore sand crabs, and intertidal home to mussels and barnacles
- White sharks often spotted